



# ZBLED Series Cast Aluminum Exit Signs

## Installation and Operation Instructions

### **IMPORTANT SAFEGUARDS**

When using electrical equipment, basic safety precautions should always be followed including the following:

### **READ AND FOLLOW ALL SAFETY INSTRUCTIONS:**

#### **NOT SELF TESTING PER ANSI/NFPA 101**

- Do not use outdoors.
- Do not let power supply cords touch hot surfaces.
- Do not mount near gas or electric heaters.
- For connection to a single source of supply such that all LED lamps are simultaneously illuminated.
- Use caution when servicing batteries. Battery acid can cause burns to skin and eyes. If acid is spilled on skin or in eyes, flush acid with fresh water and contact a physician immediately.
- Equipment should be mounted securely in locations and at heights where it will not be readily subjected to tampering by unauthorized personnel.
- The use of accessory equipment not recommended by the MANUFACTURER may cause an unsafe condition.
- The AC voltage rating of this equipment is specified on the product label. Do not connect equipment to any other voltage.
- Do not use this equipment for other than its intended purpose.
- Servicing of this equipment should be performed by qualified service personnel.

### **SAVE THESE INSTRUCTIONS**

## **ELECTRICAL CONNECTIONS**

### **WARNING :**

**MAKE SURE THAT POWER IS OFF BEFORE MAKING ANY ELECTRICAL CONNECTIONS!!!**

- **White:** Return for 120 VAC or 277 VAC wiring.
- **Black:** Hot lead for 120 VAC wiring.
- **Red:** Hot lead for 277 VAC wiring.
- **Green:** Equipment ground.

1. Make sure that all wires are carefully tucked away from the cavity behind the plastic inset.
2. Plug the mating connector of the battery to the PC board.
3. Unused wires must be capped using enclosed wire nuts.

### CANOPY MOUNTING (Top or Side End mount):

1. Remove face plate cover by pulling equally at the outer rim of the face plate on two opposite sides. Remove ground wire from face plate. **(Figure F)**
2. Pop out the plastic mounting hole cover on the top or the side of the sign. Place one of the nuts from threaded stem rod in the slot inside the housing just inside of unit. **(Figure A)**
3. Feed the AC supply and ground wire through the nut & hole and out of the sign housing. **(Figure B)**
4. Secure the Canopy J-box cover to the mounting area of the exit sign by inserting it and shifting it over to align the hole.
5. Feed AC supply wires and ground wire through threaded stem and screw stem into nut inside unit. Screw the remaining nut for the threaded stem onto the stem and tighten securely to complete the mounting of the canopy to the exit sign. **(Figure C)**
6. Determine the position the exit needs to be mounted (which way the face needs to be pointed). Use the included round J-box mounting plate & small 8-32 screws to accomplish. **(Figure D)**
7. Make connection with the AC supply wires in the J-Box as described in the Electrical Connection section of these instructions.
8. Now mount the sign to the J-box plate with the (2) 8-32 screws provided and tighten securely. **(Figure E)**
9. Remove the proper chevron(s) from the EXIT legend(s) if necessary, Re-attach the ground wire to the face plate. **(Figure F)**
10. Attach battery jumper wire to PC board and replace face plate back on unit to complete installation.

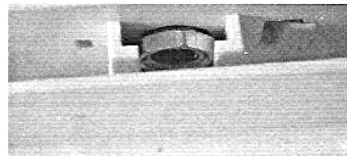


Figure A

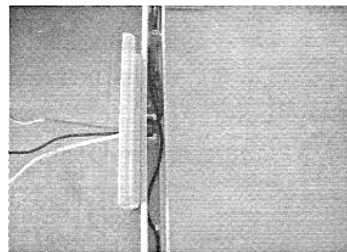


Figure B

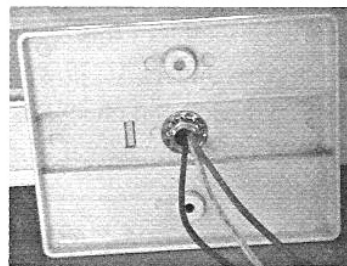


Figure C

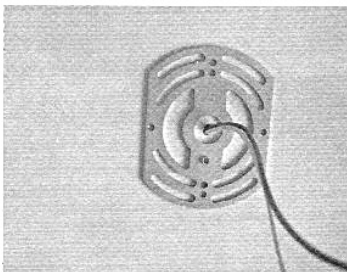


Figure D

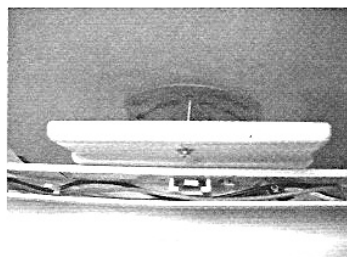


Figure E

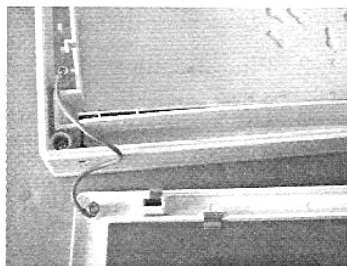


Figure F

### FLUSH MOUNTING (Single Face Wall Mount):

1. Remove face plate cover by pulling equally at the outer rim of the face plate on two opposite sides. Remove ground wire from face plate. **(Figure F)**
2. Remove the center KO and also required KO's that will match the junction box.
3. Route the wires through the center knock-out. Make electrical connections inside the junction box as described in the Electrical Connection section of these instructions. Push wires back against the back of the sign to minimize any of the wires interfering with the illumination of the letters.
4. Now mount the sign to the J-box.
5. Remove the proper chevron(s) from the EXIT legend(s) if necessary, Re-attach the ground wire to the face plate. **(Figure F)**
6. Attach battery jumper wire to PC board and replace face plate back on unit to complete installation.