



### IMPORTANT SAFEGUARDS

When using electrical equipment, basic safety precautions should always be followed including the following:

### READ AND FOLLOW ALL SAFETY INSTRUCTIONS:

#### NOT SELF TESTING PER ANSI/NFPA 101

- Do not use outdoors.
- Do not let power supply cords touch hot surfaces.
- Do not mount near gas or electric heaters.
- For connection to a single source of supply such that all LED lamps are simultaneously illuminated.
- Use caution when servicing batteries. Battery acid can cause burns to skin and eyes. If acid is spilled on skin or in eyes, flush acid with fresh water and contact a physician immediately.
- Equipment should be mounted securely in locations and at heights where it will not be readily subjected to tampering by unauthorized personnel.
- The use of accessory equipment not recommended by the MANUFACTURER may cause an unsafe condition.
- The AC voltage rating of this equipment is specified on the product label. Do not connect equipment to any other voltage.
- Do not use this equipment for other than its intended purpose.
- Servicing of this equipment should be performed by qualified service personnel.

### SAVE THESE INSTRUCTIONS

#### PLEASE NOTE:

THIS UNIT IS FOR MOUNTING IN SUSPENDED TYPE CEILINGS AND OTHER TYPES OF CEILINGS WHERE ACCESS TO THE CEILING IS AVAILABLE AFTER INSTALLATION AND BUILDING FINISH IS COMPLETED. DO NOT INSTALL THIS UNIT IN FINISHED DRYWALL OR OTHER TYPES OF CEILINGS WHERE THERE WILL BE NO ACCESS FROM ABOVE OR BELOW TO THE PLENUM AREA.

STEP ONE: Preparing the CEILING to ACCEPT the fixture and placing fixture in the ceiling:

1. Determine the proper location for where the sign is going to be mounted. Remove cardboard template from the box and place against the ceiling tile or area of the ceiling where exit light is going to be installed and trace a line around the tem-plate (**Figure A**). This will be the area that is going to be cut out. You may want to do the cutting on the ground if possible.
2. Cut the rectangular hole out of the ceiling area (**Figure B**).
3. Slide the entire unit DOWN THROUGH THE CUT OUT HOLE. (**Figure C**)
4. Seat the bar hangers in the T-Bar grid or mount them to the wood truss to secure the fixture in place. (**Figure D**)
5. Make adjustments to the bar hanger holder bracket (**Figure E**) to bring the fixture into proper ceiling height alignment to accept the finish trim plate. This height is determined by making sure the finish plate screw holes are just slightly above the finished ceiling (**Figure E**). To make the adjustments, simply loosen the screws on the bar hanger holder bracket and adjust unit up or down to the proper position and then re-tighten the screws (**Figure F**).
6. Slide the finish plate through the EXIT PANEL and connect the two switch wires and place the LED indicator light inside the hole. (**Figure G**) Screw the plate to the unit.

STEP TWO: Making the Electrical Connection:

1. Remove the junction box cover on the top of the unit. (**Figure J**)
2. Place conduit connector in provided hole of j-box. (**Figure K**)
3. Connect the low voltage battery wires. (**Figure L**) The unit will turn on at this point.
4. Make the proper electrical AC connection by bringing the supply wires into the j-box and connecting them to the proper wires. (120 volt—use BLACK for HOT, WHITE for Common) (277 volt – use RED for HOT and WHITE for COMMON)
5. Replace J-Box cover.

## ELECTRICAL CONNECTIONS

**WARNING: 1.MAKE SURE THAT POWER IS OFF BEFORE MAKING ANY ELECTRICAL CONNECTIONS!!!  
2.UNUSED WIRES MUST BE CAPPED USING ENCLOSED WIRE NUTS.**

- **White:** Return for 120 VAC or 277 VAC wiring.
- **Black:** Hot lead for 120 VAC wiring.
- **Red:** Hot lead for 277 VAC wiring.
- **Green:** Equipment ground.

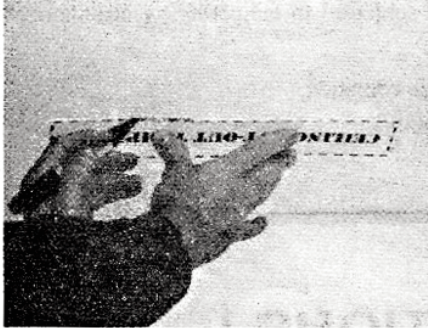


FIGURE A



FIGURE B

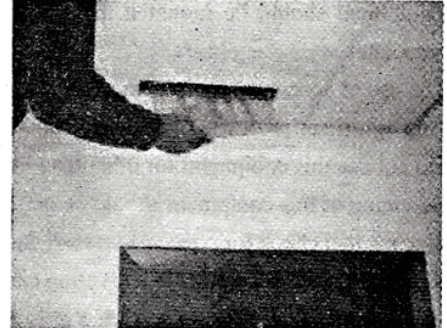


FIGURE C

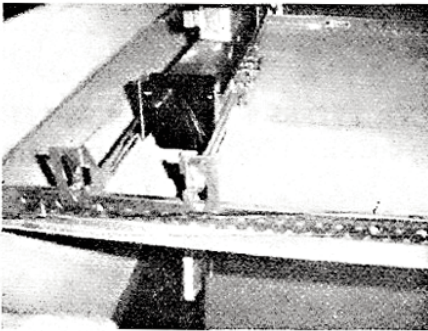


FIGURE D



FIGURE E

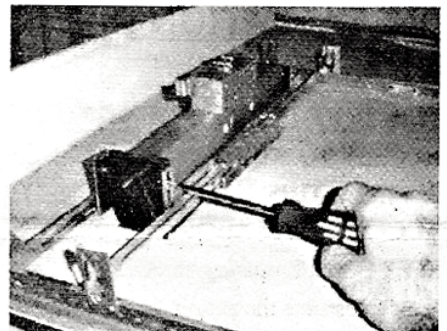


FIGURE F

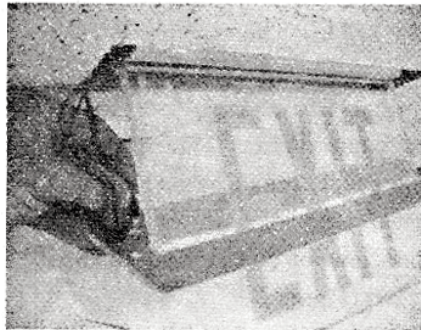


FIGURE G

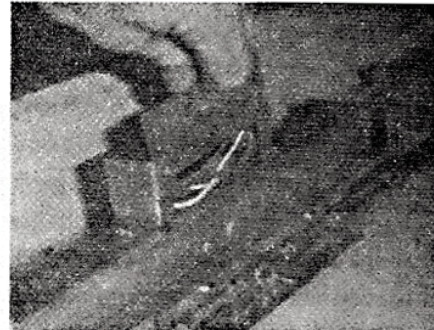


FIGURE J

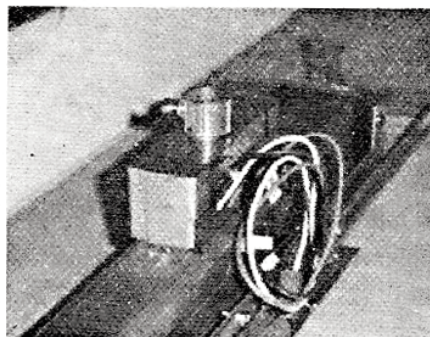


FIGURE K



FIGURE L